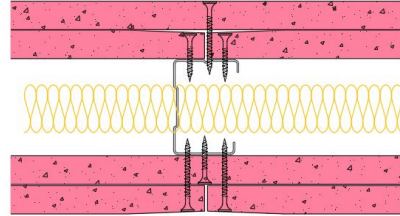


50-K-62(25) - SPEEDLINE System Data Sheet - Version V1 (24-10-23)

SPEEDLINE 50mm 'C' Stud Partition @600mm Ctrs,
with 2x Knauf 15mm Fire Panel each side, 25mm
APR



System Performance Breakdown

Fire Resistance:

BS476 Part 22:1987:

Test Ref & Date or Applied Ref & Report:

Max Height:

Thickness:

Duty Grade: BS 5234: Part 2:1992:

Sound Insulation:

120/120 Minutes (Integrity/Insulation).

BRE 288793 - BRE Report P102396-1011B

Refer to Speedline Specification Clause

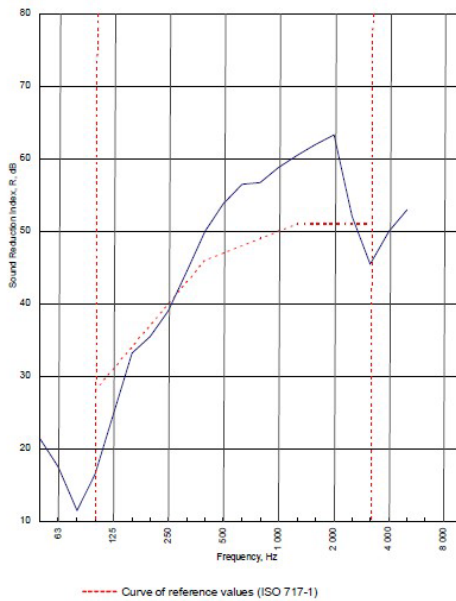
112 mm. (At Base Track, Excluding Finishes)

Severe - Annexes A-F

47 R_w dB, Date Tested or Assessed Against - 50-K-57(25)

Test Code:
H17386BA
Test Date:
15/06/2011

Freq. Hz	R dB
50	21.3
63	17.5
80	11.4
100	16.4
125	24.6
160	33.2
200	35.4
250	39.0
315	44.6
400	50.0
500	53.8
630	56.5
800	56.7
1 000	58.8
1 250	60.5
1 600	62.0
2 000	63.3
2 500	52.1
3 150	45.5
4 000	50.0
5 000	53.0
6 300	
8 000	
10 000	



Rating according to BS EN ISO 717-1:1997 **R_w (C;Ctr) = 47 (-4;-12) dB**
 Max dev. 11.6 dB at 100 Hz

Evaluation based on laboratory measurement results obtained by an engineering method:

$C_{50-3150}$ = -7 dB	$C_{50-5000}$ = -6 dB	$C_{100-5000}$ = -3 dB
$C_{9,50-3150}$ = -17 dB	$C_{9,50-5000}$ = -17 dB	$C_{9,100-5000}$ = -12 dB

TESTED AT ONE OF THE UKAS ACCREDITED LABORATORIES BELOW

B.T.C (H-Ref on Graph)

B.R.E

AIRO

S.R.L

Customer: Metsec plc Hepsec Division



BTC 17406A: Page 9 of 11

SPEEDLINE Drywall Systems, Adsetts House, 16 Europa View, Sheffield Business Park, Sheffield, S9 1XH.

Tel: 0114 231 8030.

Email: enquiries@speedlinedrywall.co.uk

(As per the requirements set out in ISO/IEC 17025:2017 regarding test data the results stated have been carried out by voestalpine Metsec plc as part of the contract to supply Speedline Metal Sections to SIG Plc)